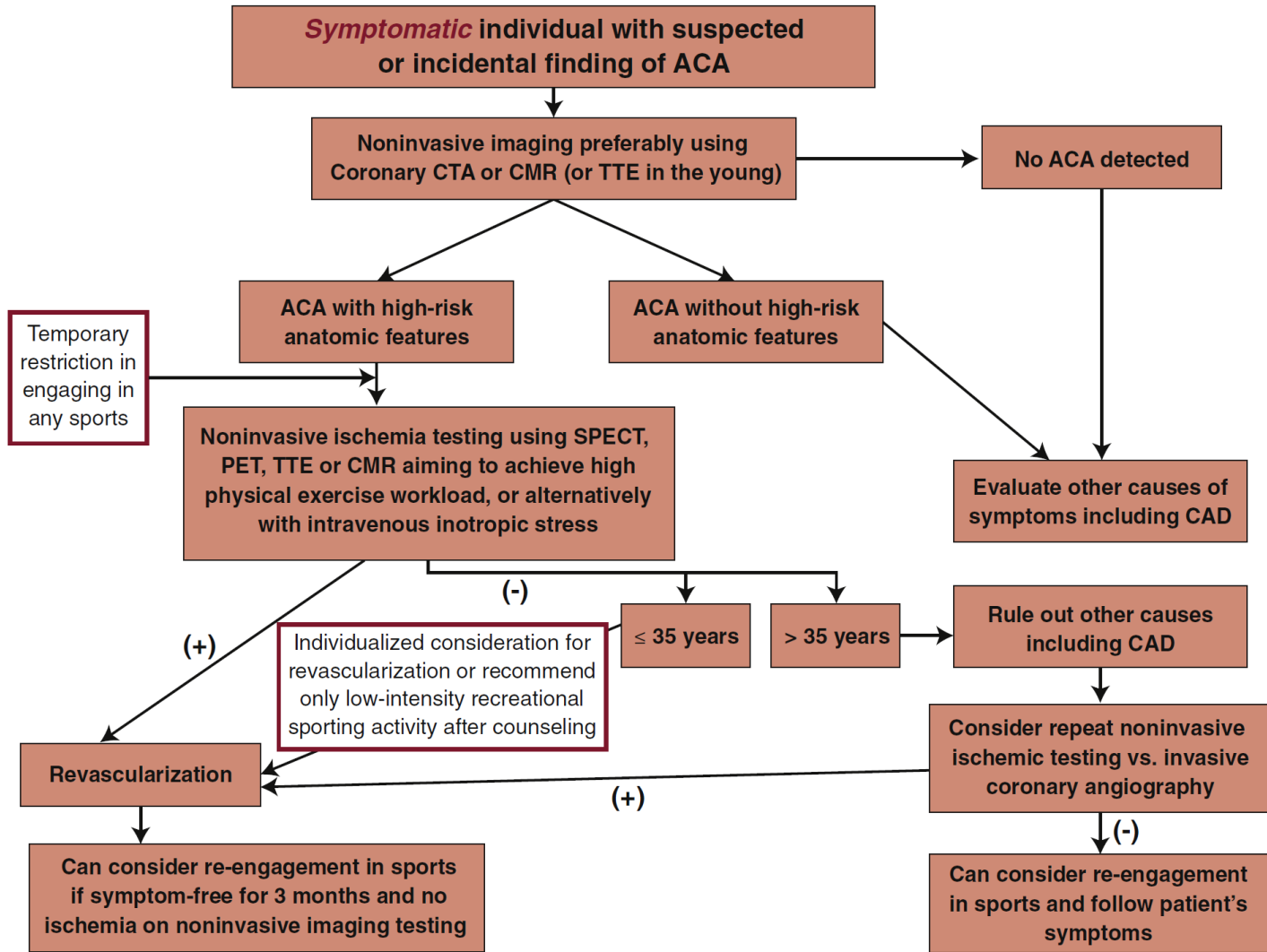


FIGURE 1 Evaluation of "Symptomatic" Individuals With Suspected or Incidental Finding of ACA



Treatment flow chart for evaluation of "symptomatic" individuals with suspected or incidental finding of anomalous coronary arteries (ACA). CAD = coronary artery disease; CMR = cardiac magnetic resonance; CTA = computed tomography angiography; PET = positron emission tomography; SPECT = single-photon emission computed tomography; TTE = transthoracic echocardiography.